

Alaska Department of Fish and Game

Habitat Section
Southeast Region



191-10-11400 Tributary 1

ADDITION

Water body name:

Survey date: 6/15/2024

Quad: Bering Glacier A-4

Species & Lifestage:

Upper Reach Latitude: 60.068921 **Longitude:** -142.426348

Survey crew: NJ, GA, FC

Lower Reach Latitude: 60.067785 **Longitude:** -142.429683

Findings: We surveyed this uncataloged stream using a backpack electrofisher and GPS and captured juvenile coho salmon. The channel crosses over the road and appears to impound water. Downstream was receiving flow from the impounded water on the road and was slightly incised; upstream was dry for about 75 ft (Table 1; Figures 1–4).

Recommendations: Add this uncataloged stream to the anadromous waters catalog for rearing coho salmon up to waypoint 265 (Figure 5).

Nomination: Pending

Table 1.–191-10-11400 tributary 1 survey data.

| Waypoint | Latitude | Longitude | Notes | Stream Width ft | Stream Substrate | Habitat Features | Gradient % | Sample Effort | Sample Results |
|----------|-----------|-------------|---|-----------------|------------------------------|------------------|------------|---------------|----------------|
| 265 | 60.068925 | -142.426371 | Channel is mostly dry ~75 ft both upstream and downstream of ford. Road may be impounding water and keeping this stretch of channel wetted at current flow. | 4-6 | Small Gravel Fine Organic | | 1-2 | EF | 2 CO |



Figure 1.–Juvenile coho salmon caught at waypoint 265.



Figure 2.—Upstream at waypoint 265.



Figure 3.—Downstream at waypoint 265.



Figure 4.—Impounded water on the road at waypoint 265.

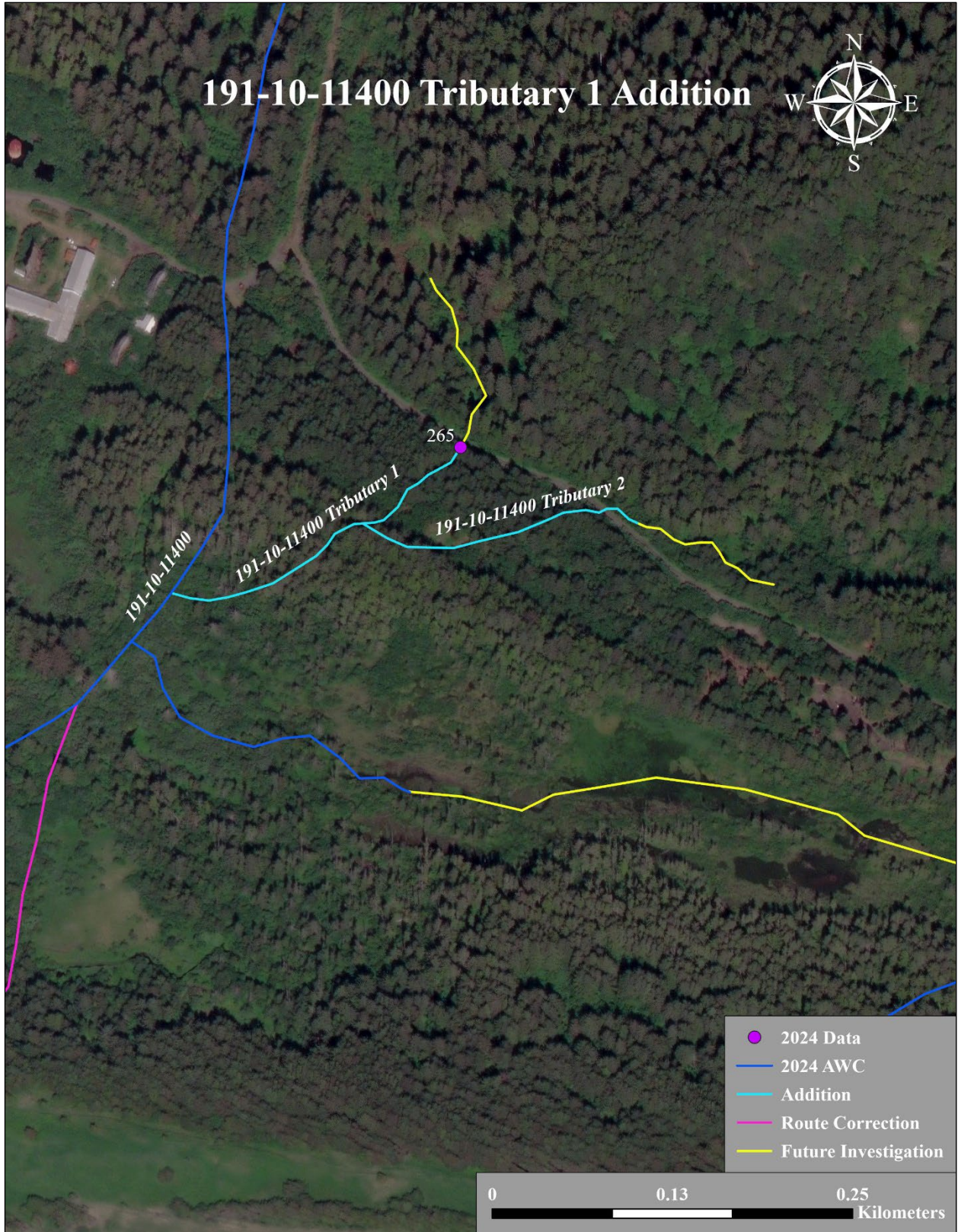


Figure 5.–191-10-11400 tributary 1 addition map.

